

### BRUSHY CREEK ROAD, GREER

1.98+- ACRE PARCEL

- ZONED CITY OF GREER CG (COMMERCIAL GENERAL)
- ALL UTILITIES AVAILABLE
- CLOSE TO GREER MEMORIAL HOSPITAL
- TAX MAP G006.00-02-001.14



**\$365,000**

FOR MORE INFORMATION CONTACT:  
 TIM ALLENDER AT 864-884-2198  
 tallender@langston-black.com  
 CHUCK LANGSTON 864-230-4302  
 clangston@langston-black.com

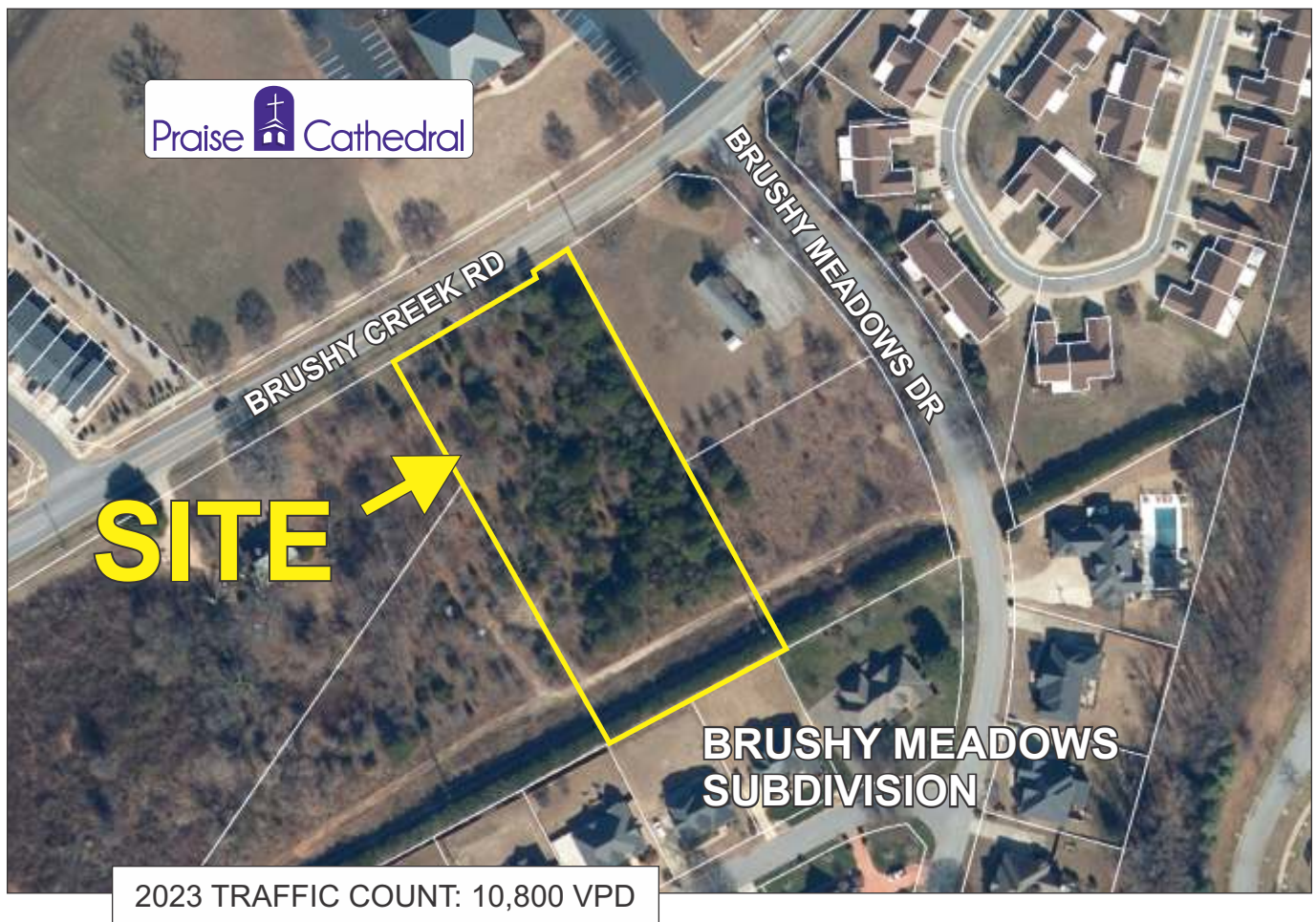
**LANGSTON BLACK**  
 REAL ESTATE, INC.

P.O. BOX 2167  
 GREER, S.C. 29652  
 BUS: 864-848-9070

002

[www.langston-black.com](http://www.langston-black.com)





LOT 1

BRUSHY MEADOWS  
PHASE 1: sec. 1 - sheet 1 of 2  
P.B. 30-R, PG. 60

FILED JUN 10 2005  
GREENVILLE, SC

LOT 2

2005 JUN 10 P 2:40

LOT 4

PLAT

188.28'  
S63°25'19"W

TIMOTHY L. NANNEY  
REGISTER OF DEEDS

06-10-2005 01CL1617

N/F SHAW ENTERPRISES  
OF THE UPSTATE

25' SEWER & DRAINAGE EASEMENT

1.98 ACRES  
INCLUSIVE OF  
ROAD R/W

N/F SHAW ENTERPRISES  
OF THE UPSTATE

N/F PETERS

FILED FOR RECORD IN GREENVILLE  
COUNTY SC R.O.D. OFFICE AT 02:40 PM  
06 10 05. RECORDED IN PLAT  
BOOK 50-B PAGE 0001 THRU 0000  
DOC # 2005051704  
*Timothy L. Nanney*

112.1' +/- TO  
BRUSHY MEADOWS DR.  
R/W

GUY ANCHOR  
P.P.

141.00'  
N60°17'11"E

47.00'  
N60°17'11"E

FIRE  
HYDRANT

O.H.P.

O.H.P.

EDGE OF PAVEMENT

P.P.

1/2" REBAR SET

READING

29.00'

N60°17'11"E

146.00'

READING

170.00'

N60°17'11"E

EDGE OF PAVEMENT

3/4" C.Y. PD.  
P.P. AT 19.83'

R/W

BRUSHY CREEK ROAD  
(S23-166) (50' R/W)

51704 ✓

50-B-1