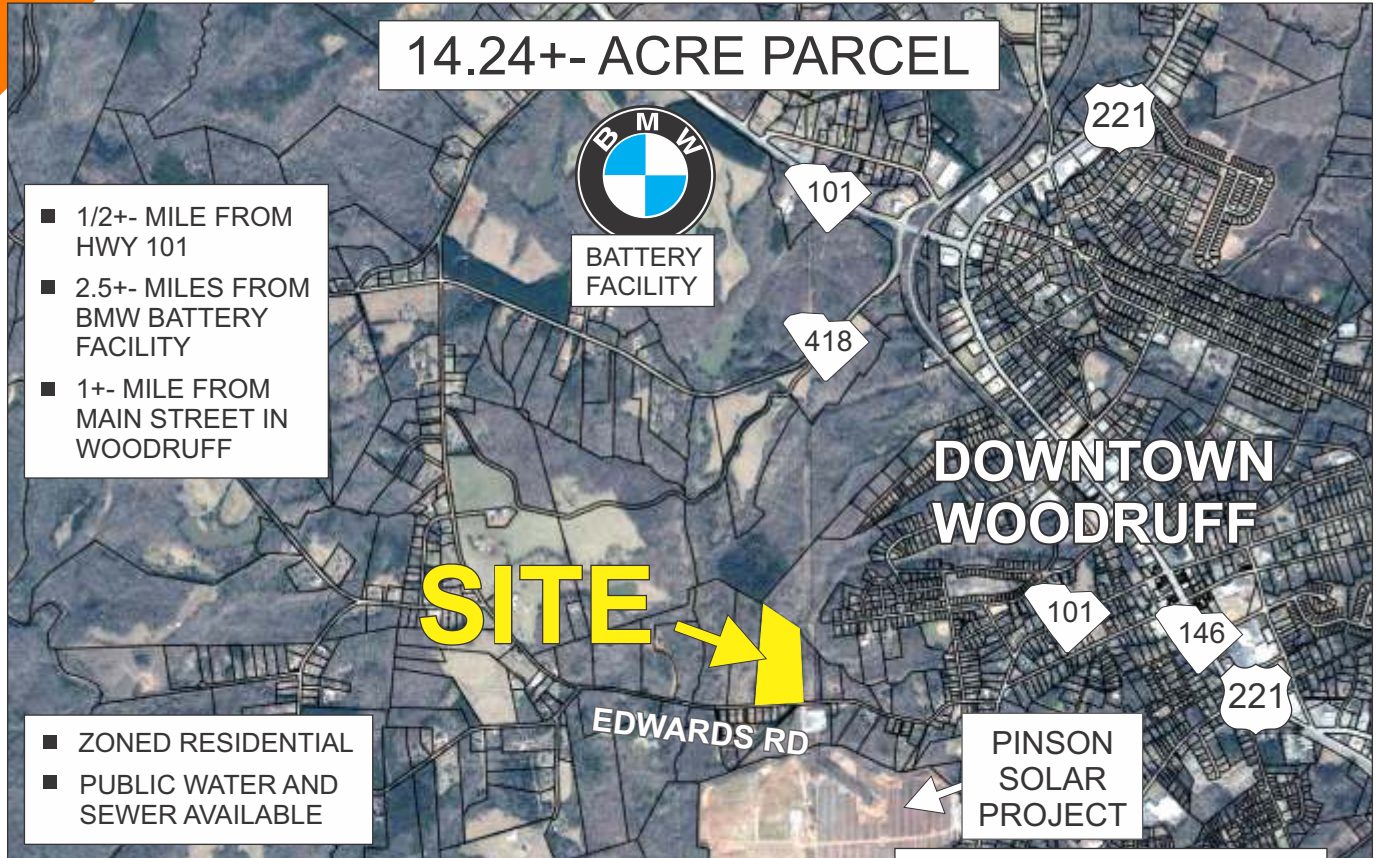


EDWARDS ROAD, WOODRUFF

14.24+- ACRE PARCEL



- 1/2+- MILE FROM HWY 101
- 2.5+- MILES FROM BMW BATTERY FACILITY
- 1+- MILE FROM MAIN STREET IN WOODRUFF

- ZONED RESIDENTIAL
- PUBLIC WATER AND SEWER AVAILABLE

PINSON SOLAR PROJECT

- IN WOODRUFF CITY LIMITS
- SPARTANBURG COUNTY 4-32-00-005.01



\$30,000/AC

FOR MORE INFORMATION CONTACT
CHUCK LANGSTON AT 864-230-4302
clangston@langston-black.com

LANGSTON BLACK
REAL ESTATE, INC.

P.O. BOX 2167
GREER, S.C. 29652
BUS: 864-848-9070

026

www.langston-black.com

Every effort has been made to ensure the accuracy of the enclosed data, but we assume no responsibility for errors. All conditions and pricing subject to change without notice.
(LANGSTON-BLACK SITE #026)

