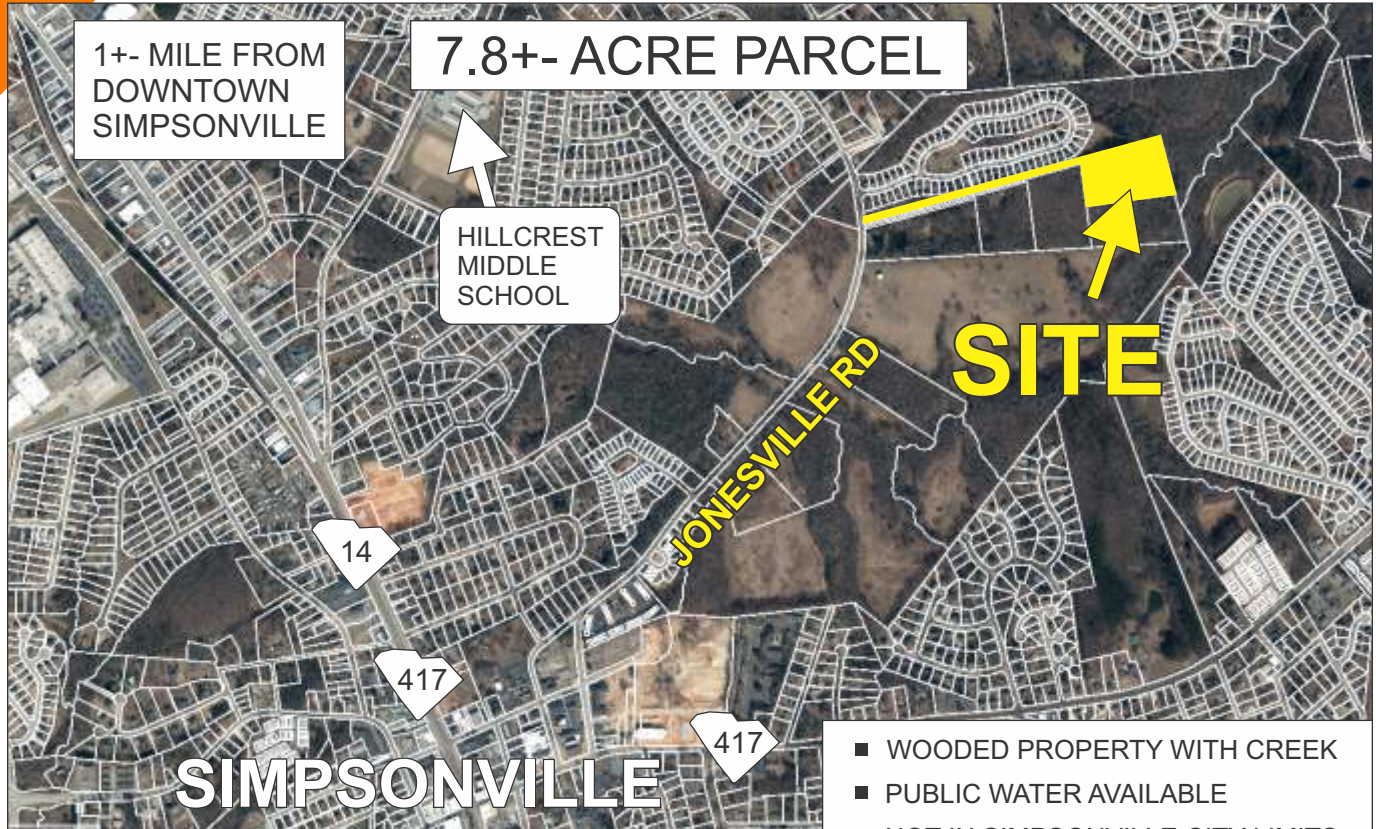


JONESVILLE ROAD, SIMPSONVILLE



1+- MILE FROM
DOWNTOWN
SIMPSONVILLE

7.8+- ACRE PARCEL

HILLCREST
MIDDLE
SCHOOL

SITE

SIMPSONVILLE

- WOODED PROPERTY WITH CREEK
- PUBLIC WATER AVAILABLE
- NOT IN SIMPSONVILLE CITY LIMITS
- TAX MAP 0559.03-01-023.00
- ZONED GREENVILLE COUNTY R-S



NOT ALL ROADS ARE SHOWN

\$499,000

FOR MORE INFORMATION CONTACT
RICK HAMMETT AT 864-313-9507
rhammett@langston-black.com

LANGSTON BLACK
REAL ESTATE, INC.

P.O. BOX 2167
GREER, S.C. 29652
BUS: 864-848-9070

019

www.langston-black.com

