

LANGSTON BLACK

REAL ESTATE, INC.

OFFICE FOR LEASE

SUITES 9D & 9E

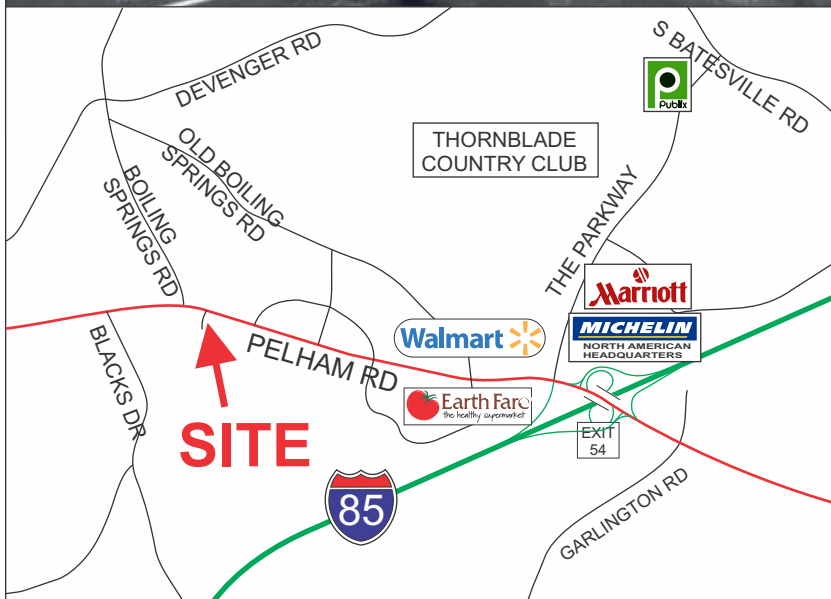
9 MAPLE TREE COURT, GREENVILLE

3,750 OR 4,500+- SF AVAILABLE

BUILDING VISIBLE FROM THE INTERSECTION
OF PELHAM ROAD AND BOILING SPRINGS ROAD



1+- MILE FROM I-85 (EXIT 54)



LARGE PARKING LOT

- ZONED GREENVILLE COUNTY OD
- TAX MAP 0533.04-01-018.02

\$17/SF NNN

FOR MORE INFORMATION CONTACT
BOB ASHWORTH AT 864-706-3488
bashworth@langston-black.com

LANGSTON BLACK
REAL ESTATE, INC.

P.O. BOX 2167
GREER, S.C. 29652
BUS: 864-848-9070

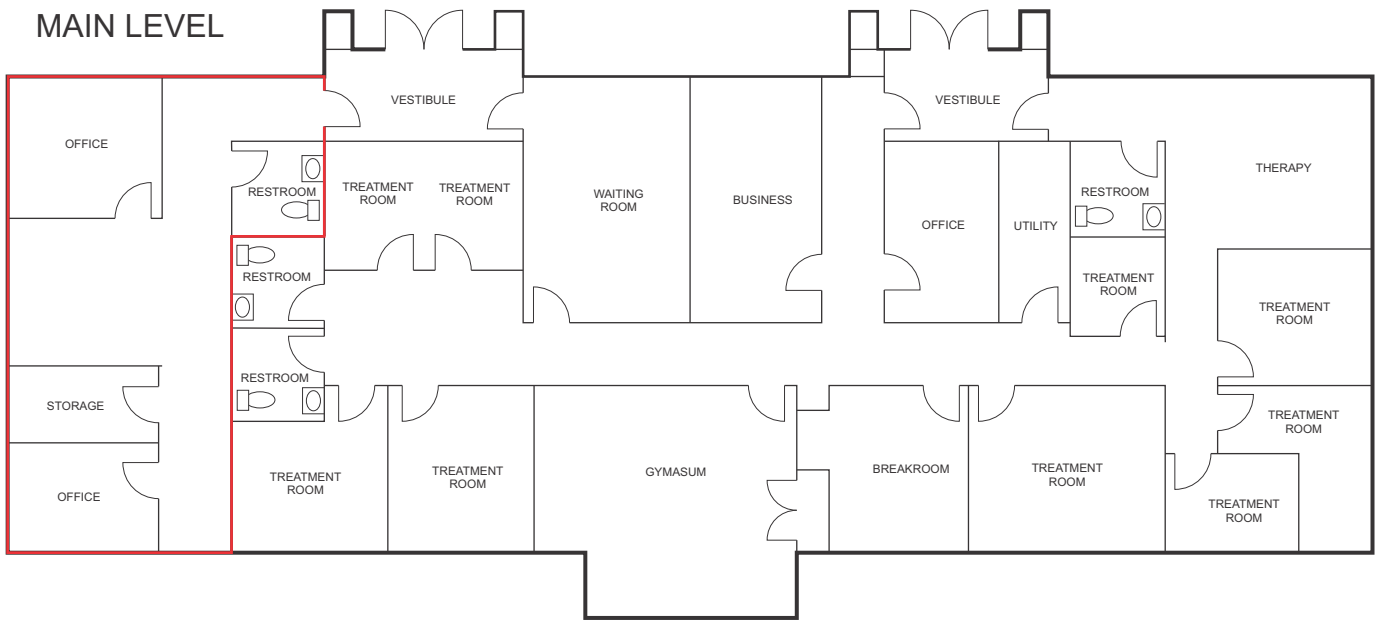
422

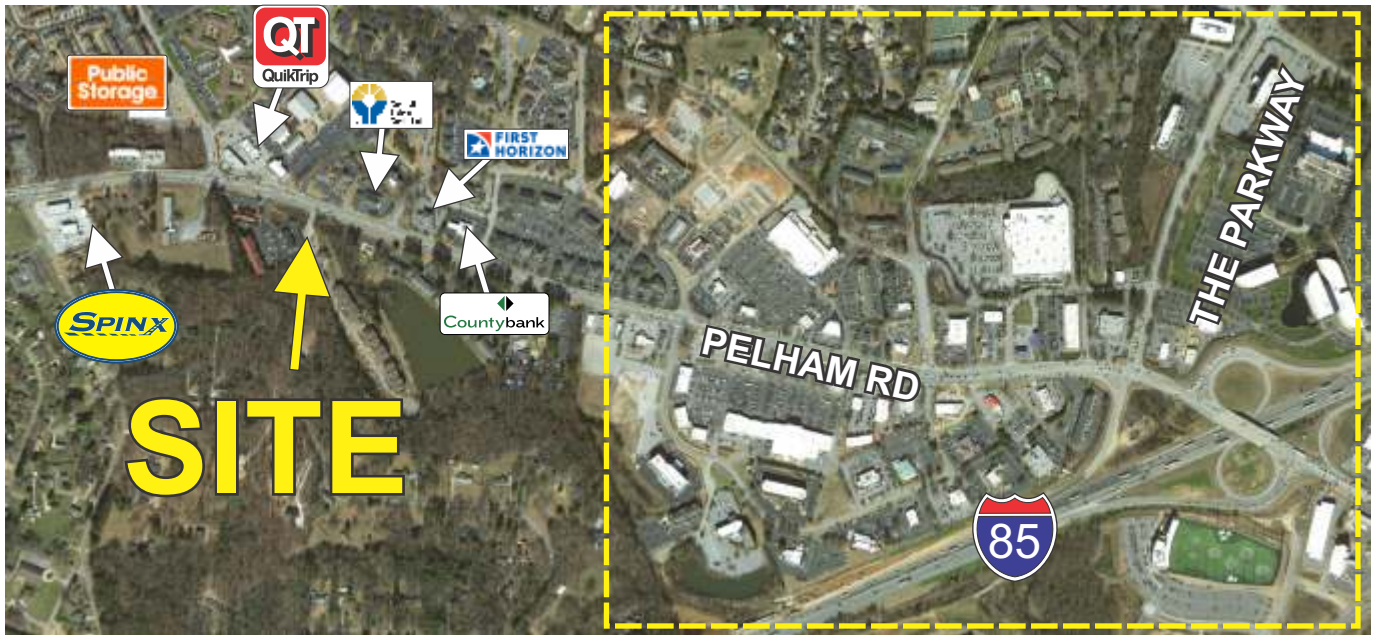
www.langston-black.com

Every effort has been made to ensure the accuracy of the enclosed data, but we assume no responsibility for errors. All conditions and pricing subject to change without notice.
(LANGSTON-BLACK SITE #422)



MAIN LEVEL





SUITE 9D





SUITE 9D



SUITE 9E

